

# District 5690 News



## IN THIS ISSUE

**Page ..... 1-2**

*Governor's Message*

**Page ..... 2**

*Condolences—Carina Michel*

**Page ..... 3**

*Did you know? - RYLA, Update your membership list! Call for 2017-18 District Governor*

**Page ..... 4**

*Rotary Youth Exchange report from France Salvation Army Bells Polio Facts & Figures*

**Page ..... 5**

*Open World news RITE Teachers Arriving Bob Goebel's Chair!*

**Page ..... 6**

*Club News Year-end deadlines for contributions to TRF*

**Page ..... 7**

*November Membership Report Rotary Foundation News*

**Page ..... 8-9**

*Ambassadorial Scholar News from Andrew Hawkins studying in Sweden*

## Message from District Governor

**Martin Bauer**



Dear District 5690 Rotarians

Happy Holidays Fellow Rotarians!!

I hope that this year has brought you success, happiness and challenges that you can handle. Even for those who may have had struggles, hopefully this Holiday season will give you a moment to regroup and energy to face the challenges of the New Year. Even when there have been challenges, I have felt so blessed to have had the opportunity to serve as District Governor for District 5690. Each of our Clubs is making an impact on its community and its members but when seen as a whole, you all should be exceedingly proud. Could you and your Club do more? Obviously the answer is YES! But that is one of the challenges I gave each of your Clubs when I visited and hope as you start planning for the remainder of your current President's year and start looking to plans for your incoming President, that you challenge your Club to expand your involvement, invite someone to join Rotary and support the Rotary Foundation. For example, has your Club selected your President elect for 2015-



16 AND reported that person's information to our Executive Secretary?

As we approach the end of the year, I also want to remind you to include the Rotary Foundation in your plans for making charitable donations. The Rotary Foundation is your Founda-

tion. To enable the District to apply for project funds three years from now, we need to increase our giving to the Rotary Foundation *now*. I am asking each Rotarian, directly or with the help of their Club, to contribute at least \$120 per year to the Rotary Foundation. Ask your Club if they have matching funds to increase the impact of your giving.

We have some exciting activities that are occurring within the District. First we had three Rotarians selected for the Zone 27 Membership Cadre—Kaydee Johnson (Winfield), Jamie Anderson (West Wichita) and Mike Andrusak (Ulysses). They received specialized training under a grant from Rotary International about membership recruitment and retention efforts that they will be bringing to the District. We will be attending the Rotary International Presi-

## MARK YOUR CALENDARS!

**March 5-7, 2015**  
**PETS (President-elect Training Seminar)**  
**Manhattan, KS**

**June 6-9, 2015**  
**Rotary Intl. Conference—**  
**Sao Paulo, Brazil**

**May 27-31, 2015**  
**RYLA**  
**Winfield, KS**



## Message from District Governor Martin Bauer (cont'd)

dent's Membership Summit in Albuquerque, January 8-10, 2015. After this conference, we will be developing ways to present membership planning for each individual Rotary Club. We understand that each Club is unique but there are some planning and implementation approaches that can help each Club develop an approach to increase and sustain their membership. Having a goal of staying the same size means you are likely to have fewer members in the future. You need a goal of growing your membership hopefully by 10%.

We are also exploring ways to establishing Visioning for the District. Some of the Clubs in the District have undertaken a long range planning process. Many Districts are now creating an ongoing visioning process so that through electronic means—Skype or Go to Meeting—more Rotarians in the District can be involved in planning and influencing the activities in the District. Several of my fellow District Governors are sharing their programs and from that the Executive Committee hopes to present a Visioning format for the District to discuss at PETS and at the District Assembly.

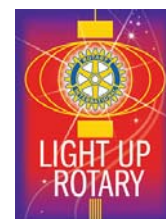
Finally thanks to Steve Woods and his Committee, a policy is being drafted to address changes to the District Conference and the method and criteria for accessing the District Conference fund that currently exists. There were some very uplifting and educational presentations at the District Conference yet only a few Rotarians participated. We soon will be sending out a questionnaire asking for your input about alternatives that would motivate you to come to the District Conference.

Thank you for continuing to help us Light Up Rotary for this District and globally. Your involvement makes a difference.

**Martin Bauer**

*District Governor 2014-15*

*Rotary Club of Wichita*



## Condolences

*The district was saddened to learn of the death of one of our Rotary Family. Here's an abbreviated obituary followed by a note of thanks from PDG Phil.*



**Carina Michel**, owner of Warren Travel, and wife of **PDG Phil Michel**, died unexpectedly on Friday, December 5, 2014 at her home. A Memorial Service was held December 11, 2014 at First Presbyterian Church. Survivors include her husband, Phil, sister Annika, sons Kip and Phil, daughter-in-law Cindy, and grandchildren

Jenna, Erin, and Nick Michel.

Born and raised in Goteborg, Sweden, Carina decided at an early age that she wanted to live in the United States. Following that dream, she became a US citizen and built a highly successful travel agency. Along with typical travel arrangements, Warren Travel specialized in adventure tours to places like Antarctica and a charter flight which brought the supersonic Concorde for its first and only visit to Kansas for a flight from Wichita to London.

Carina cared deeply for those less fortunate than herself, and served for years as a Board member for the Women's Initiative Network, a non-profit agency that aids and sup-

ports victims of domestic violence, helping and equipping them to succeed in the workplace and society. She was also a long-time member of First Presbyterian Church, where she worked with young children and served as a Deacon, Elder, and Chaired the Music and Worship Committee. Memorial donations to First Presbyterian Church, 525 North Broadway, Wichita, Kansas, 67214.

*To the Rotarians of District 5690*

*I want you to know how much I appreciate the care and concern for me and my family expressed by so many of you after the death of my wife. While Carina had to drop out of Rotary some years back due to business scheduling issues, as a Paul Harris Fellow, she continued her love and respect for Rotary and all that we do.*

*Thank you one and all,*

*Phil Michel*

*DG 2011-12*



## Did You Know?

**Update your membership list!** - Starting in January, clubs no longer will be able to make adjustments to their club invoice, so be sure to update your membership information by 1 January to ensure that your invoice balance is correct. Find instructions on how to [add](#), [edit](#), and [remove](#) members and [how to pay your club invoice](#) at [www.rotary.org/clubinvoice](http://www.rotary.org/clubinvoice).

- **RYLA 2015**—Save the dates of May 27-31 for RYLA. It is not too soon to begin finding students for RYLA. The applications and all information are online at the District web site or [www.sckans.edu/leadership](http://www.sckans.edu/leadership) and then click on Rotary Camp.
- **United Miles Giveaway**—Because of your votes, Rotary received 3.3 million miles from United Airlines' 10 Million Charity Miles giveaway last year, and those miles sent students from around the world on unforgettable yearlong exchanges. Certified districts selected exceptional candidates with financial need to receive miles covering their round-trip airfare. Monique, a student from a Native American pueblo in New Mexico who was selected for an exchange in

Brazil, acknowledges, "Throughout my life, I have had to overcome many obstacles that have made me the person I am today." Maia, who is studying in Ecuador, says that "in a family of six, my options for travel have been rather limited." Despite the challenges, these charismatic, intelligent, and optimistic exchange students all agree that their time abroad will be the beginning of a lifelong journey of cultural discovery. "I know I'll be bringing the world together in understanding," says DeWayne, who realized his dream to travel from his home in Arkansas, USA, to Italy. Mayra, who will be the first person in her family to attend college and who is a role model to three younger siblings, believes this kind of experience is what moves people "to eradicate diseases, build communities, fight famine, and create lasting changes."

Your vote in this year's United Charity Miles giveaway, in December, could help change the lives of more deserving students. Check back at [www.rotary.org](http://www.rotary.org) for more details and to cast your vote!

Also, consider [donating miles](#) to provide free airfare for people in need of lifesaving surgery and for other worthy causes.

## Call for District Governor Nominations for 2017-2018

The month of November begins the process for selecting the District Governor for the 2017-2018 Rotary year. One of the most important things a club can do is to allow the district to benefit from your club's leaders by encouraging them to be a District 5690 leader.

Pertinent dates for the District Governor Nomination process are as follows:

- |             |  |
|-------------|--|
| November 15 | District Governor Bauer has invited clubs to submit suggestions to the nominating committee in an official call to all club presidents via email. Candidates submitted will be considered by the nominating committee. |
| Dec / Jan   | Additional announcements for District Governor will be published in the December and January issues of the monthly newsletter.   |
| January 15  | Deadline for the receipt by either the governor or the nominating committee chair of club nominations of District Governor candidates.   |

February 15 Deadline for selection of nominee for governor by the nominating committee. The nominating committee chair will promptly notify all candidates of the decision.

This position is challenging but very rewarding and you are asked to review your member list and consider nominating a candidate. If you have questions, call any committee member. Nomination committee members are Mike Ford (Beaver), Charlene Mathis (Derby), Steve Woods (Wichita), PDG Larry Rumburg, PDG Sue Pearce (E. Wichita), PDG David Nygaard (Newton), Committee Secretary PDG Rod Kreie (Newton), and Committee Chair PDG Phil Michel (W. Wichita), Chair.. For their contact information please refer to the district web site. <http://www.rotary5690.org/>

**PDG Phil Michel**  
**Nomination Committee Chair**  
[phil\\_michel2001@yahoo.com](mailto:phil_michel2001@yahoo.com)  
**Office—316-681-3292 or Cell—316-213-5515**



## Rotary Youth Exchange

It's November. I can't believe that my exchange is almost half over already. It is such a weird feeling because the time has gone so quickly and yet it also feels like I've been here forever and can't imagine being anywhere else. I don't think I explained that very well, but then that is kind of how I feel. I was going to write this report yesterday morning while my friend was still asleep and I had some free time. Then we went to a fencing world cup, I taught a Brazilian how to make chocolate chip cookies, and we watched almost an entire season of Downton Abbey. The world cup was cool, though I know absolutely nothing about fencing and my friend and I had the most fun cheering for the American (who got fourth place!) and pretending to fence in the hallway with blow up swords. Then Laura, an exchange student from Brazil who I spend almost every week-end with, had never made cookies before, so we had to do that. I probably wasn't the best person to teach her because our cookies turned out a little weird (I blame the butter and metric measurements), but they tasted fine. After that we stayed up until two in the morning watching Downton Abbey. Basically, I didn't get around to writing this, but I think that sums up pretty well my life here. It's just life only I have new experiences every day.

To give a report of my life in France during November I am just going to list anyway I happen to think of that my life is different or a new experience I have had. I was insanely happy one evening because I was sitting in the living room with my host parents doing homework with the TV on

when I realized that I had just understood what was on the TV without looking at it or even trying to understand AND I then had a short conversation with my host mom about it. I sit at the table for every meal and have at least three courses and lots of bread. (I have no idea how I will survive without bread at every meal when I go home) My grades are not great, but they're not that bad either which I am totally fine with. I also actually have to study here and even my classes in English are hard. My host parents tell me to put on a heavier coat, take medicine when I just have a cold, and to do my homework before the night before it's due, so basically, I'm not treated as much like an adult. It is pretty much the most amazing feeling ever when I answer questions in my classes that are in French. (Which I have done about three times.) My French teacher has now decided that I speak French well enough, but need to speak more so she asks me questions about completely random things in front of the class.

I go rock climbing twice a week even though I used to be afraid of heights. Whenever I don't have any plans my host parents make some for me which usually means spontaneously visiting castles or museums. Some days I have school from 8am to 6pm and others I only have two hours all day. Those are definitely not the only ways my life is different now, but they are the ones that popped into my head in the last 10 minutes, so we'll go with that.



Valerie Goertz

## Salvation Army Bells Were Ringing



Rotarians from many clubs in the district were ringing bells for the Salvation Army this month.

Thank you one and all!



## Polio Facts & Figures\*

<u>Area</u>	<u># of cases YTD 2014</u>	<u># of cases YTD 2013*</u>
Afghanistan	25	11
India	0	0
Nigeria	6	50
Pakistan	283	75
Non-endemic countries	19	224
Total Worldwide	333	360

\*Data as of **17 Dec 2014** / World Health Organization  
Go to [www.polioeradication.org/Dataandmonitoring/Poliothisweek.aspx](http://www.polioeradication.org/Dataandmonitoring/Poliothisweek.aspx) for more information



## Open World Program Opportunity

Right now we are looking for a RC to host an Open World delegation of Women Entrepreneurs from Russia. The program is scheduled for the 14-22 March hosting week. Would you please share this message with the U.S.-Russia ICC members and see if any of them might be interested and able to participate in the program.

Should you have any questions please feel free to contact me at your convenience.

Natalia Kunzer  
Open World Program Officer / Programs  
<https://www.rotary.org/myrotary/en/rotary-clubs>  
Ph.:1 (847) 859-7532

## RITE Teachers Arriving Soon

The Rotary Clubs of **West Wichita** and **Wichita Sunrise** are preparing for five RITE teachers coming in January to participate in our outstanding RITE program. Host homes are a huge facet of the great success of this program. Twenty host homes are needed to accommodate our three teachers from Argentina and two teachers from Panama. If you, or someone you know, can host a teacher for a week OR if you need more information, please contact Shelli Kadel at 316.838.0150 or [kadel-shelli@gmail.com](mailto:kadel-shelli@gmail.com). Here are the dates hosts are needed: **January 17-24 || January 24-31 || February 1-7 || February 8-14**

## Recognizing Local Leaders While Increasing Membership



Every year the Rotary Club of Shallotte in North Carolina, USA, hosts the Business Leaders Luncheon, an invitation-only event to recognize local professionals for their hard work and contribution to the community.

"This is an opportunity for these busy professionals to see the club firsthand," says Doug Terhune, membership chair. And by conducting club business during the luncheon, members remove the perceived "secrecy" that can sometimes surround club meetings.

Around 20 percent of attendees ask about membership and 10 to 15 percent express interest in joining. The event has also increased donations to the club's annual fundraiser.

[Learn more about the event.](#)

*From RI Membership Minute Newsletter 17 Dec 2014*



Dictionaries in Ulysses



**Bob Goebel (RC Wichita)** in chair he built in the new Memories Park at Sedgwick County Park

**Your Club News and Photos could be here!**

*Send your club news to newsletter editor  
Geri Appel at [appelg@kenlerman.com](mailto:appelg@kenlerman.com)*

*Note that your editor does not have time to visit each club's website or Facebook page for news. Please send news via email or newsletter.  
Thanks!*

# Club News from around the District

**Rotary Club East Wichita:** Club member Dr. Fred Heismeyer recently visited a Rotary Club in Accra, Ghana.



## **Rotary Club Wichita DT:**

We celebrated big club anniversaries—L-R *Dick Cummings (50 yrs), Fran Jabara (50 yrs), and PDG Dick Hartwell (55 years)*

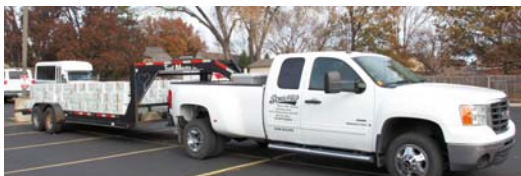
**Rotary Club Newton:** We learned at the annual Christmas party and DG Martin Bauer is really an elf! (per Rod Kreie)



## **Rotary Club East Wichita:**

Wichita East Rotarians delivered 76 turkey dinners to area families in need the Wednesday before Thanksgiving. The dinners were

purchased from contributions of club members and is an annual tradition with



club members very involved in the delivery. We also held our annual Wichita Children's Home Christmas party. And we also held our annual Holiday Party at Intrust Bank Arena.

**Rotary Club Garden City:** Our club's dictionary project was featured in the *Garden City Telegram* with this photo and caption.



Lona DuVall, president of the Finney County Economic Development Corp. and a member of the **Garden City Rotary Club**, hands Victor Ornelas Elementary School third-grader Kevin Nguyen a new dictionary as part of the Rotary Dictionary Project. The project's purpose is to give every student a personal dictionary of their

own that will serve them at least through elementary and middle school. The Rotary Club will be providing every third-grader in the district with a dictionary this year.

## **Rotary Club West Wichita:**

Club members and Interactors built bookshelves in Bob Goebel's garage again this year.



## 2014 Year-end Deadlines for TRF Contributions

### **Credit Cards:**

Via rotary.org – must be authorized by midnight on Wednesday, **31 December 2014**.

Via fax (847-328-5260), phone (866-976-8279) or mail - must be received prior to the close of business on Wednesday, **31 December 2014**.

Credit card contributions should not be sent to Rotary's Lockbox Addresses below; rather they should be done online at Rotary.org to ensure timely recording or fax them to 847-328-5260.

For security purposes, please do not send credit card contributions electronically, rather fax them to 847-328-5260. **You can also make contributions over the phone by calling 866-976-8279 during regular business hours.**

**Mail (least preferred):** Both the postmark on the envelope and the date written on the check must be no later than Wednesday, **31 December 2014** and received by Thursday, **8 January 2015**

*Please note:* Contributions mailed at the end of **December 2014** intended as early gifts for **January 2014** will be treated as **December 2014** gifts. Do not mail **January 2015** gifts in the month of January.

The Rotary Foundation  
14280 Collections Center Dr.  
Chicago, IL 60693 USA

**Wire transfers:** Must be initiated prior to Wednesday, **31 December 2014** and received by Monday, **5 January 2014**.



District 5690 MEMBERSHIP REPORT as of November 30, 2014					
	7/1/2014	11/30/2014	NET GAIN	Goal	YTD
	MEMBERSHIP	MEMBERSHIP	2014-15		to Goal
Andover	23	23	0	23	0
Arkansas City	57	57	0	100	-43
Beaver	18	17	-1	18	-1
Boise City	14	15	1	15	0
Cimarron	26	27	1	26	1
Derby	68	66	-2	70	-4
Dodge City	38	38	0	38	0
East Wichita	125	125	0	150	-25
El Dorado	49	55	6	52	3
Garden City	41	43	2	41	2
Greensburg	12	15	3	20	-5
Guymon	27	27	0	27	0
Hugoton	25	24	-1	26	-2
Hutchinson	123	126	3	123	3
Johnson	17	17	0	17	0
Kingman	32	32	0	32	0
Kinsley	14	14	0	14	0
Larned	22	22	0	22	0
Liberal	46	46	0	46	0
Newton	51	53	2	57	-4
Pratt	64	64	0	64	0
Sublette	16	17	1	16	1
Syracuse	21	19	-2	21	-2
Texhoma	16	20	4	16	4
Ulysses	38	37	-1	42	-5
Wellington	19	19	0	19	0
W. Sedgwick Co	45	45	0	45	0
West Wichita	63	63	0	63	0
Wichita-DT	390	391	1	425	-34
Wichita-Old Town	17	15	-2	17	-2
Winfield	84	88	4	87	1
<b>TOTALS</b>	<b>1601</b>	<b>1620</b>	<b>19</b>	<b>1732</b>	<b>-112</b>

Thank you for submitting your membership goal! Others not reported (yet).

## Rotary Foundation News

### Every Gift to the Rotary Foundation has an impact

It takes less than \$10 to provide bed nets that give people in Uganda a safe, peaceful night's rest and protect them from malaria. Every year, hundreds of thousands of people — children, families, and entire communities — benefit from projects funded by The Rotary Foundation. Have you made your gift to the Foundation this year?

- [See what your gift supports](https://www.rotary.org/myrotary/en/take-action/give/give-gift-rotary)  
(<https://www.rotary.org/myrotary/en/take-action/give/give-gift-rotary> )
- [Find more ways to give](https://www.rotary.org/myrotary/en/take-action/give/ways-give)  
<https://www.rotary.org/myrotary/en/take-action/give/ways-give>

**GIVE**



District 5690

[www.rotary5690.org](http://www.rotary5690.org)

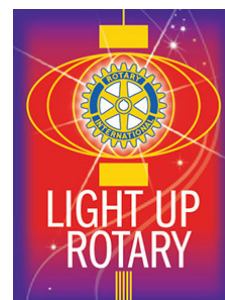
**This is your newsletter!**  
Send your articles and club information to:

PDG Geri Appel, Editor

Phone: 316-733-5800

Fax: 316-733-5077

[appelg@kenlerman.com](mailto:appelg@kenlerman.com)



2014-2015 RI Theme

Gary Huang, Taiwan

RI President



Rotary International  
Convention

June 6-9, 2014

Sao Paulo Brazil

*Don't miss the latest edition of our Ambassadorial Scholar, Andrew Hawkins, news from Ipsala University on the following pages.*



UPPSALA LIGHTS UP

# Rotary District 5690 Ambassadorial Scholarship News

NOVEMBER 2014

A thick fog grips the spires of Uppsala cathedral as I walk to my morning class. It's nearly nine o'clock and the sun is still but a distant glow, tightly hugging the eastern horizon. The air is brisk and I increase my pace. As I sidestep patches of ice on the sidewalk, I notice a certain emptiness in the streets and plaza square. The bustling feeling which characterized the city just last month has slowed to a muffled hum. It is cold outside, and I am glad to have reached my destination.

One classmate would later tell me that this month is forecasted to be the darkest November on record due to a thick blanket of cloud parked over Central and Southern Sweden. This, paired with the cold, might be why many residents prefer staying in rather than bearing the icy temperatures, he tells me. After telling me this, he chuckled at the irony of Northern Sweden, notorious for its short days during the winter months, getting more sunlight than the South this year.

As I left the university later that afternoon, I was once again amazed at how short the days are during the winter months in Sweden. It was a quarter past three and pitch-black outside! However, what amazed me the most was the resilient nature of the Swedes in not letting the darkness slow them down, and their every attempt to brighten their everyday. Despite the darkness outside, the city has been awash in a beautiful array of different colored lights as part of the third annual *All Lights on Uppsala* campaign, where 15 places along a walking trail in central Uppsala have been decorated with various light effects for the entire month of November. The idea behind the campaign was to show the city in a new light, and create a sense of comfort and security during the dark autumn evenings. It has been a beautiful addition to an already beautiful Uppsala, and has no doubt brightened the days of those lucky enough to enjoy it.



Top: Uppsala Castle lights up. Above: Carolina Library awash with color and lasers.

In addition to the spectacular lighting display, my days have been made brighter by the welcoming embrace of several local Rotary clubs, including the local Rotaract club. This month I was able to make significant headway with making contacts and friends within Rotary and Rotaract. The month kicked off with a Rotary mingle hosted by Uppsala Rotaract where members of all seven Rotary clubs were present. This was a fantastic opportunity to meet members from all clubs and I was even invited to several clubs' meetings to give a presentation about our district- something I am more than eager to do. I was also able to attend a Rotaract meeting where the founder of Rotaract in Sweden, Martin Tilly, gave an interesting presentation about starting the organization and his experiences with managing complex projects from start to finish. With new contacts and new friends within Rotary, I am positive that the months ahead will each be brighter than the last.

On the studies front everything is going well. This month saw the start of a new course, Research Methods, which is both interesting and useful while I continue to conduct research for my thesis project. More on this and further updates on my engagement with Rotary next month. Until then, hej då!



## More from Around Uppsala...



Town hall lights up as part of *All Lights on Uppsala*.



Members from all seven Rotary clubs in Uppsala mingle at an event hosted by Rotaract.



Martin Tilly, founder of Rotaract in Sweden in 2000, shares his experiences with managing complex projects.



A green laser stretches from Carolina Library as part of *All Lights on Uppsala*.