

District 5690 News



IN THIS ISSUE

Page 1-2

Governor's Message

Page 2

Golf Tournament 6/8/15

Page 3

Rotary Club Hutchinson celebrates 100 years of service

Page 4

Margo Hewko visits Kansas Club News pt 1

Page 5

*Rotary Foundation News
-Foundation Banners
-Funding Model revised
-Donor Advised Funds
-PRID Phil Silvers visits 8 clubs in D5690
-Polio Facts and Figures*

Page 6

Club News pt 2

Page 7

*Club News pt 3
District Training
Assembly a Success!!*

Page 8

*April Attendance Report
Deadlines for 2015
contributions to TRF*

Page 9

*Annual Fund Banner
Recognition Status
Report @ 5/15/15*



Message from District Governor

Martin Bauer



Dear District 5690 Rotarians

The last thirty days for our District have been a buzz of activity. In addition to the projects continuing by our Clubs, there have been many opportunities to participate and learn more about Rotary. First Marga

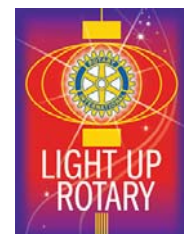
Hewko, the wife of the General Secretary of Rotary International, spoke to two clubs about international projects and the impact of those projects around the world. Then Past RI Director Phil Silvers spoke to 8 Clubs about Rotary Peace initiatives. We learned that at no cost to our District we could sponsor young professionals to receive training on mediation, collaborative efforts, anti-bullying and related services to bring to your communities and our District. Mr. Silvers brought first-hand experience as he started the first Rotary Club in an occupied territory and heads the Rotary Cadre Committee that reviews and approves all international service projects through Global Grants for Rotary. His specialty is in Africa where he was headed after he left Kansas. If you know a professional that would be inter-



ested in the 3 month or 2 year Peace and Conflict Resolution programs, contact me or other leaders in the District.

Then on May 9th, David Yoder and many others guided the District Assembly. Donna Meier Pfeifer and Robert Mendoza led

the discussion about District and Global grants. Remember that the deadline for your Club's grant is May 31! The application is on the District Website. In addition to other training and planning, our Membership Cadre, Jamie Anderson (W. Wichita), Kaydee Johnson (Winfield) and Mike Andrusak (Ulysses) led a discussion about membership efforts to gain and retain members. It was great to see the benefits of their training from Rotary Zone and particularly to see young professionals so engaged in and willing to serve Rotary at the district level. One of their key points is that a Club is not going to increase or even maintain its membership unless it has a written membership plan with steps for implementing it. The Cadre



MARK YOUR CALENDARS!

May 27-31, 2015

**RYLA
Winfield, KS**

July 24-15, 2015

**Zone Leadership Institute
Denver, CO**

Oct. 2-3, 2015

**District Conference
Newton, KS**

June 6-9, 2015

**Rotary Intl. Conference—
Sao Paulo, Brazil**

Sept. 15-20, 2015

**Zone Institute
San Antonio, TX**

Mar. 31-Apr. 2, 2016

**PETS
Manhattan, KS**

Message from District Governor Martin Bauer (cont'd)

members and resources from our Zone and the District are willing to meet with clubs to develop and help implement membership plans. We made a commitment as a District to increase our membership by 10% in the next three years. We have reversed the trend by increasing our membership in the District but membership should be every Rotarian's effort.

These Rotary efforts are possible through our continued commitment to OUR Rotary Foundation. There are 40 days left in this Rotary year. If you want your Club to have more money in three years to fund a District grant in your community, now is the time to check whether you individually and your Club have contributed at least \$120 per member this year. If we achieved this goal, we could have over \$60,000 each year for grants and an equal amount for global grants. From a small commitment come great dividends.

Finally I was reminded last weekend of how connected we can be through Rotary. My wife and I went to a wedding in Sun Valley Idaho. While there I happened

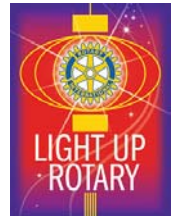
to see a man with a Rotary emblem on his shirt. He pointed to where I found the District 5400 conference in full swing. DG Rick Phillips was hosting his District Conference. They had just heard from Jim Lewis and his wife about his personal trials and successes because he contracted polio. They too had an iron lung on display. Then I walked the Rotary Director Greg Podd and his wife Pam from our Zone. I found myself being interviewed by the local television station to talk about the impact of Rotary service projects and funding.

I hope you continue your involvement with Rotary and realize that you will get more in return than you invest in Rotary. Continue to Light Up Rotary in your life, your community and our District!

Thanks for continuing to Light Up Rotary!

Martin Bauer

*District Governor 2014-15
Rotary Club of Wichita*



The **W. Sedgwick County Sunrise Rotary Club Golf Tournament** will be held on Monday, June 8, at Reflection Ridge Golf Course. The cost is \$600 per team or \$150 per individual player.



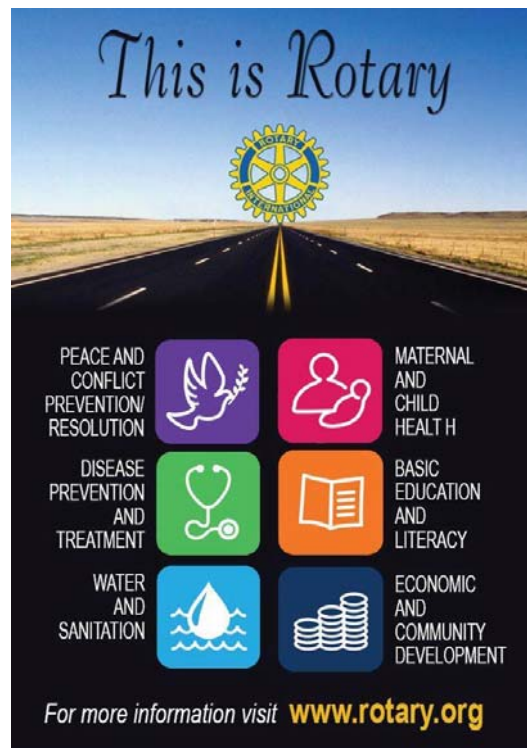
Here are a few of the prize and auction items: (with more to come!)

- First Place, First Flight - 4 Coleman Roadtrip Grills
- Dewalt 20 volt combo pack - drills, saws, etc. \$600 value
- WSU Package - Signed ball by Gregg Marshall, game tickets
- Broilmaster 36,000 BTU Gas Grill
- Esky Cooler - Coleman's equivalent to the Yeti
- Custom Canvass Wildlife picture with a \$500 collectible knife
- Working on an outing to All Things BBQ for 10 people and limo service to and from
- We are also working on a cabin in Branson, MO and Colorado.

Register at www.sunrisegolfwichita.com

Proceeds will benefit the expansion plans at the Sunrise Boundless Playscape in Sedgwick County Park.

Interesting fact: Since the playscape was built, the park has doubled the number of visitors per year to over one million!



Rotary Club of Hutchinson turns 100

Monday, May 4 was a special day in Hutchinson when the Rotary Club of Hutchinson celebrated its 100th anniversary with a special luncheon event in downtown Hutchinson followed by dedication of a community park project completed for the occasion. Special lunch speaker was Past Rotary International Director Phil Silvers from Tucson Arizona. The event was attended by many guests including District 5590 Governor Martin Bauer, District Governor Elect David Yoder, Past District Governor Geri Appel and District 5670 Governor Roger Marshall (Great Bend).



Celebration Cake (yum!)

Beautiful Table Settings



Club Member & Mayor of Hutchinson Jade Piros de Carvalho delivers Proclamation of Rotary Day in Hutchinson



Club President Wayne Unruh



A large crowd was on hand for the celebration



Special guests: PRID Phil Silvers, DG Roger Marshall (5670), DG Martin Bauer (5690) & PDG Geri Appel



Past Rotary International Director Phil Silvers spoke on Rotary & Peace



Following lunch, we walked 2 blocks to the park where the Hutchinson Club restored a secluded section near a bridge and added a table and chairs. Project leaders Marcy Kaufman and Martha Fee did the honors

100
years

100
years

Congratulations Hutchinson

Marga Hewko Speaks at Area Clubs



Marga Hewko has traveled the globe trying to achieve her goal of making the world a better place. Marga is the wife of Rotary International General Secretary John Hewko, who's based at the Rotary world headquarters in Evanston IL with 600 others.

"What is a meaningful way I can access this (the Rotary support structure)?" Marga asked herself.

"I found communities that needed help and they had money they wanted to spend...wisely." Marga has traveled to, among other places, Africa, Haiti, and her home country of Argentina. "I consider it a privilege," Marga said.

When in Africa trying to build a school for a population with only a 30% literacy rate, Marga found that there was no readily available water and the project would have to be delayed. "There are bumps in the road," Marga said, "but so what, we're Rotarians. We'll find a solution." For example, roads in Africa are often poor so rather than the expense of purchasing and maintaining cars, Marga arranged for bicycles for caregivers to reach the population.

As a guest of Frank Stuckey (Newton), Marga spoke to the Rotary Clubs of Newton and East Wichita during her visit to Kansas.



Club News and Activities

SUNRISE ROTARY PLAYSCAPE CLEAN-UP

The Rotary Club of WSC-Sunrise held a Spring clean-up at their Boundless Playscape, located in Sedgwick County Park, on Saturday, April 25. The event organizer, **Steve Fischer**, enlisted help from the community. As a result, there was a record number of approximately 40 volunteers.

Besides Sunrise club members, volunteers were there from **West Wichita Rotary Club**, **West Wichita Interact Club**, **Rotaract Club**, **Robinson Middle School**, **Bishop Carroll High School**, **Newman University**, **East High IB program**, **East High pre-IB program** plus a few others from the **community**. The weather was perfect and everyone worked together to paint the gazebos, sweep the play areas, trim and weed and just do a general clean-up to prepare the playground for the new season. Juice, coffee, donuts and breakfast burritos were provided to feed the hungry workers. The next clean-up will be scheduled in the Fall.



Rotary Foundation News

Annual Giving Club Banners & Recognition—

Clubs:review the attached Annual Fund Banner Recognition Status report to see where your club stands for annual giving to The Rotary Foundation. Will you receive a banner because every Rotarian in your club gave *something* this year (and your per capita giving was \$100 or more)? Will your club receive a banner for being one of the top 3 per capita giving clubs? Will your club receive a banner because every Rotarian in your club gave \$100 or more this year?



Many clubs are very close to achieving more than \$100 per capita. If you're one of them, and even if you're not, reach to your club members and encourage them to give NOW!

New Rotary year will bring updated funding model—

The Rotary Foundation's funding model goes into effect on 1 July. Although much will remain the same, project sponsors will now have to contribute an additional 5 percent for cash contributions made to The Rotary Foundation for global grant applications submitted on or after 1 July, to offset processing and administrative costs. We're updating the online grant application tool to automatically calculate the 5 percent and to show the total amount required to fund the project. Paul Harris Fellow recognition points will be awarded on the full cash contribution, and charitable tax receipts also will reflect that amount. The additional 5 percent is not matched by the Foundation. It also isn't required for contributions sent directly to a project's bank account; however, such contributions don't generate Paul Harris Fellow recognition points, nor will the Foundation issue tax receipts for them.

Rotary/UNESCO-IHE scholarships available—

The Rotary Foundation and UNESCO-IHE Institute for Water Education are offering up to 10 scholarships for graduate study at UNESCO-IHE's Delft campus in the Netherlands. The application deadline is 15 June. Scholars will receive a Master of Science degree in urban water and sanitation, water management, or water science and engineering. Graduates work with their Rotary club sponsors on a related project to benefit their local community. Learn how your club or district can sponsor a UNESCO-IHE scholar. For more information, review the application tool kit and scholarship terms and conditions. When you're ready to apply, complete the Rotary club/district application and submit it through the grant application tool.

Planning with Rotary's Donor Advised Fund—

Rotary's Donor Advised Fund offers an effective tax-planning tool for your charitably-minded Rotary club members and friends of Rotary.

Contributions to a Donor Advised Fund account are tax-deductible in the year they are made, allowing individuals to donate in one tax year and then decide later which charities they want to support.

It can also assist with retirement planning. Individuals in their pre-retirement years can make tax-deductible contributions while they have income to offset. Once they retire and their incomes decline, they will have a dedicated fund to continue their support of their favorite charities.

For more information contact

planned.giving@rotary.org or visit the website: <http://www.gftpln.org/Home.do?orgId=6612>

Past RI Director Phil Silvers visits D5690—



Derby Rotarians Ed Friesen, Charlene Mathis and DGND Robert Mendoza with PRID Phil Silvers

We were honored to have **PRID Phil Silvers** in our district the week of May 4-8. He spoke at 8 area clubs: Hutchinson, Old Town, West Wichita, Newton, Winfield, Sunrise, Andover and Derby on **Rotary and Peace**. His talk was still being discussed at District Training Assembly the following Saturday.

Thank you PRID Phil for visiting our District again!

Polio Facts & Figures*

<u>Area</u>	<u># of cases YTD 2015</u>	<u># of cases YTD 2014*</u>
Afghanistan	1	4
India	0	0
Nigeria	0	7
Pakistan	23	76
Non-endemic countries	0	9
Total Worldwide	24	96

*Data as of **20 May 2015** / World Health Organization
Go to www.polioeradication.org/Dataandmonitoring/Poliothisweek.aspx for more information

Club News from around the District

Rotary Club West Wichita: Our 3rd annual Wine Dinner and auction was a huge success with 80+ guests enjoying fine food and wines. Entertainment was provided by Friends University Latin Trio. During the evening guests bid on 29 silent auction items and 7 live auction items that were sold by auctioneer Lonnie McCurdy. More than \$7,000 was raised for our Rotary projects and community service initiatives.



Rotary Club W Sedgwick County: We are providing \$600 to Lawrence & Benton Elementary schools to provide literacy programs to targeted students this summer. We are also providing \$150 toward the Agoo (Philippines) water well project. Three students have been selected to receive one of our High School Scholarship awards.

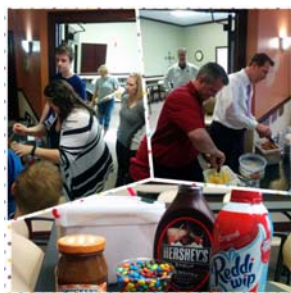
Rotary Club Ulysses: We enjoyed Brazilian and Taiwanese cuisine with our Youth Exchange Students Andre' Aires & Vanessa Hsu on May 7. Tickets supported the students' summer tour expense.

Rotary Club Sunrise/West Wichita & Interact: We had a great time and good turnout for the Dodge Ball tournament which helped raise funds for the Interact 2016 Panama trip.



Thanks to everyone for participating!

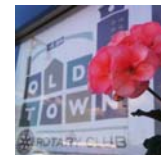
Rotary Club Old Town: For our Service Night, we were at St. Anthony's Family Shelter and had an ice cream sundae station for the families. There were smiles, sprinkles, and sugar all around. We received a thank you note from the director saying, "Residents are still buzzing about how wonderful the Ice Cream Social was. I overheard two families talking about how dinner and dessert were 'Perfect!'"



Rotary Club E. Wichita: Our FUN(d)raiser raised almost \$11,000 to award grants to our community non-profits.

Rotary Club Derby: In our first 2 months participating with the Derby Family Community Services Food Bank, we have contributed more than 200 lbs. of food!

Rotary Club Old Town Wichita: We thank everyone who purchased and helped sell and distribute geraniums, a major fundraiser for our club.



Rotary Club West Wichita: Our team, "The Bruisers" managed to take 1st place at the Interact Dodgeball Tournament last Saturday. Due to the tournament being rescheduled, there were a few less teams

than originally anticipated but we still faced good competition from the Rotaract and Interact Clubs.

Rotary Club Wichita: Our RIF (Reading Is Fundamental) teams have completed their final RID reads and we are excited about adding four new schools to the RIF program next year.



Rotary Club E. Wichita: Several of us assisted the young ladies of Gerard House baking treats for a special woman in their life – their mother, grandmother, aunt or friend for Mother's Day. The girls assisted with the mixing, making and piping frosting, decorating the cupcakes and packaging the gifts. Each girl packaged four of the prettiest cupcakes into a box, selected a card, and a special LED flower to accompany their gifts.

Rotary Club Ulysses: PDG Larry Rumburg was recently honored for becoming a Paul Harris Fellow +7. The news was carried in *The Ulysses News*.



Rotary Club W. Sedgwick Co. Sunrise: Anna Griekspoor, our 2015 "Ralph & Armida Hight High School Scholarship" recipient, was presented with a certificate by Cody Wray, Foundation Chair. Anna introduced herself to the club and read the essay she submitted. Also pictured above, Dana Schirer, winner of our 2015 Super Bowl Pool which helps fund this project.



More Club News from around the District

Rotary Club Newton: We had busy April. We launched the inaugural Paddle Battle on Sand Creek to help fund our scholarships. We presented scholarships to two local high school students. We hosted Marga Hewko as she visited Kansas and got an update on "Rachel's Challenge" which we help fund with our golf scramble proceeds. This month, we had our 2nd Chisholm Trail Bike Ride and picked up trash last Saturday. On May 22 we hold our 2nd Birdies Against Bullies Golf Scramble.

Rotary Club Old Town Wichita: We recently received a letter from the Rotary Club of Mansfield, Victoria, Australia to notify us that on June 10 their club will be extending Fraternal Rotary Greetings to our club. See letter below or [Click here to read the letter.](#)

District Training Assembly in Dodge City—May 9, 2015

***OVATION! was the word of the day:
learning was the goal of the day and fellowship was the outcome of the day.***

Over 50 Rotarians attended the DTA which was filled with informative sessions on membership, service and RI updates. Attendees, made up of President-Elects, Secretaries and other Club & District Leadership, had an excellent opportunity to learn more about club management and updates on District initiatives and receive many useful resources; as well as engaging in conversations with fellow Rotarians. The day, although stormy, ended with a blue sky as we departed from the DTA and traveled back to our communities. You can expect more excitement as we move into the new Rotary year.

Please plan to attend the upcoming District Conference and other District events and become more deeply involved in Rotary and "Service Above Self."



DGE David Yoder got the day started with enthusiasm



*A large group participated in DTA
Here, Donna Meier Pfeifer discusses District Grants*



DG Martin introduced our Membership Cadre.

On the podium is our "bag of distractions"



District Webmaster Kevin Geraci actually told us to get out our phones!

We learned about the District Website and Rotary Club Central



We were "linked" together for awhile, too!



Our membership cadre members took us through an exercise to help us grow our clubs

Special Thanks to District Trainer Fred Heismeyer in arranging this great meeting

Article and photos courtesy of District Trainer Fred Heismeyer

District 5690 MEMBERSHIP REPORT as of April 30, 2015					
	7/1/2014	4/30/2015	NET GAIN	Goal	YTD
	MEMBERSHIP	MEMBERSHIP	2014-15		to Goal
Andover	23	22	-1	23	-1
Arkansas City	57	57	0	100	-43
Beaver	18	24	6	18	6
Boise City	14	15	1	15	0
Cimarron	26	26	0	26	0
Derby	68	67	-1	70	-3
Dodge City	38	37	-1	38	-1
East Wichita	125	133	8	150	-17
El Dorado	49	53	4	52	1
Garden City	41	41	0	41	0
Greensburg	12	16	4	20	-4
Guymon	27	27	0	27	0
Hugoton	25	21	-4	26	-5
Hutchinson	123	123	0	123	0
Johnson	17	16	-1	17	-1
Kingman	32	32	0	32	0
Kinsley	14	14	0	14	0
Larned	22	22	0	22	0
Liberal	46	43	-3	50	-7
Newton	51	53	2	57	-4
Pratt	64	63	-1	64	-1
Sublette	16	16	0	16	0
Syracuse	21	16	-5	21	-5
Texhoma	16	20	4	16	4
Ulysses	38	39	1	42	-3
Wellington	19	19	0	19	0
W. Sedgwick Co	45	43	-2	45	-2
West Wichita	63	62	-1	70	-8
Wichita-DT	390	389	-1	425	-36
Wichita-Old Town	17	15	-2	17	-2
Winfield	84	89	5	87	2
TOTALS	1601	1613	12	1743	-130

Thank you for submitting your membership goal! Others not reported (yet).

Get Your TRF Contributions in TODAY!

Please note the following **2015 Rotary Fiscal Year-end Deadlines** for TRF Contributions:

- **Credit Cards:** Online via www.rotary.org – must be authorized on or prior to 30 June 2015, midnight (CST). Fax: (+1-847-328-5260)—must be received prior to close of business on 30 June 2015. Do not send credit contributions electronically.
- **Phone: (+1-866-976-8279)** - must be received prior to the close of business 28 June 2015.
- **Checks:** must be postmarked Tuesday, **30 June 2015** or prior and received by The Rotary Foundation by 8 July 2015.
- **Wire transfers:** Must be initiated prior to 30 June 2015 and received by 2 July 2015.

Please do NOT send in checks for the 2014-15 Rotary year until after 30 June 2015. All checks received with June postmarks go toward 2014-15 contributions.



District 5690

www.rotary5690.org

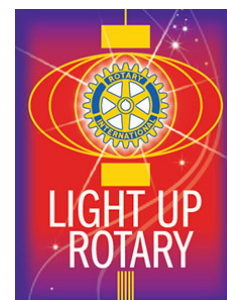
This is your newsletter!
Send your articles and club information to:

PDG Geri Appel, Editor

Phone: 316-733-5800

Fax: 316-733-5077

appelg@kenlerman.com



2014-2015 RI Theme

Gary Huang, Taiwan

RI President



Rotary International
Convention

June 6-9, 2014

Sao Paulo Brazil



Be a gift to the world

2015-2016 RI Theme



ANNUAL FUND BANNER RECOGNITION STATUS REPORT

For Rotary Fiscal Year: 2014 - 2015

Zone 27 District 5690 Active Clubs 31

Club ID	Club Name	1-July Members	Annual Fund Per Capita	Top 3 Per Capita	Current Members	EREY Members	% EREY	EREY Banner	Sustaining Members	% Sustaining Members	100% SM Banner
Totals		1,601			1,613	620	38%	0	235	15%	0
61190	Andover, KS	23	\$167.96	2	22	12	55%		10	45%	
1577	Arkansas City, KS	57	\$9.15		58	2	3%		1	2%	
1600	Beaver, OK	18	\$0.00		24	0	0%		0	0%	
1601	Boise City, OK	14	\$120.82		15	8	53%		8	53%	
1579	Cimarron, KS	26	\$0.00		26	0	0%		0	0%	
1580	Derby, KS	68	\$56.99		67	56	84%		1	1%	
1581	Dodge City, KS	38	\$8.42		37	2	5%		2	5%	
21665	East Wichita, KS	125	\$83.16		132	82	62%		49	37%	
1582	El Dorado, KS	49	\$71.16		53	24	45%		12	23%	
1583	Garden City, KS	41	\$95.12		41	33	80%		6	15%	
1584	Greensburg, KS	12	\$22.92		16	0	0%		0	0%	
1602	Guyton, OK	27	\$3.70		27	0	0%		0	0%	
1585	Hugoton, KS	25	\$208.28	1	21	20	95%		20	95%	
1586	Hutchinson, KS	123	\$1.63		122	2	2%		2	2%	
1587	Johnson, KS	17	\$61.76		16	0	0%		0	0%	
1588	Kingman, KS	32	\$7.97		32	0	0%		0	0%	
1589	Kinsley, KS	14	\$76.43		14	14	100%		0	0%	
1590	Lamed, KS	22	\$5.45		22	2	9%		1	5%	
1591	Liberal, KS	46	\$46.43		43	3	7%		3	7%	
1592	Newton, KS	51	\$126.10	3	54	48	89%		14	26%	
83429	Old Town Wichita, KS	17	\$0.00		15	0	0%		0	0%	
1593	Pratt, KS	64	\$57.39		62	16	26%		7	11%	
1594	Sublette, KS	16	\$50.00		16	1	6%		1	6%	
1595	Syracuse, KS	21	\$4.76		16	1	6%		1	6%	
1603	Texhoma, OK	16	\$83.09		20	1	5%		1	5%	
1596	Ulysses, KS	37	\$76.49		39	8	21%		7	18%	
1597	Wellington, KS	19	\$0.00		19	0	0%		0	0%	
55937	West Sedgewick County-Sunrise, KS	46	\$95.22		43	18	42%		14	33%	
24865	West Wichita, KS	63	\$87.22		62	23	37%		23	37%	
1598	Wichita, KS	390	\$89.22		390	225	58%		48	12%	
1599	Winfield, KS	84	\$14.80		89	19	21%		4	4%	
Totals		1,601			1,613	620	38%	0	235	15%	0

Data as of 16 May 2015

See the last page for a glossary of the report columns
Page 2 of 3

_Annual_Fund_Banner_Recognition_Status R00086.1407